



FLEXIAGENT

Market Leading, Independent Estate Agents



Chesterfield Close

Southport, PR8 3JL

Offers Over £340,000

NO ONWARDS CHAIN

Flexi-Agent is delighted to present this fantastic three bedroom detached property to the open market. Located in the heart of Ainsdale Village, it has great transport links and is nearby a wealth of amenities including: shops bars and restaurants.

The property briefly comprises of: Entrance hallway, a spacious Living Room full of natural light with a log burning stove, a second reception room, a well proportioned kitchen, conservatory and a useful utility room.

To the first floor three well proportioned double bedrooms one with ensuite shower room and a modern four price family bathroom.

Externally the property benefits from ample driveway parking, garage, and a sun catching west facing garden.

Early inspection of this property is strongly recommended to fully appreciate the accommodation on offer.

Council Tax Band D
EPC D
Leasehold

Viewing is available immediately by appointment.

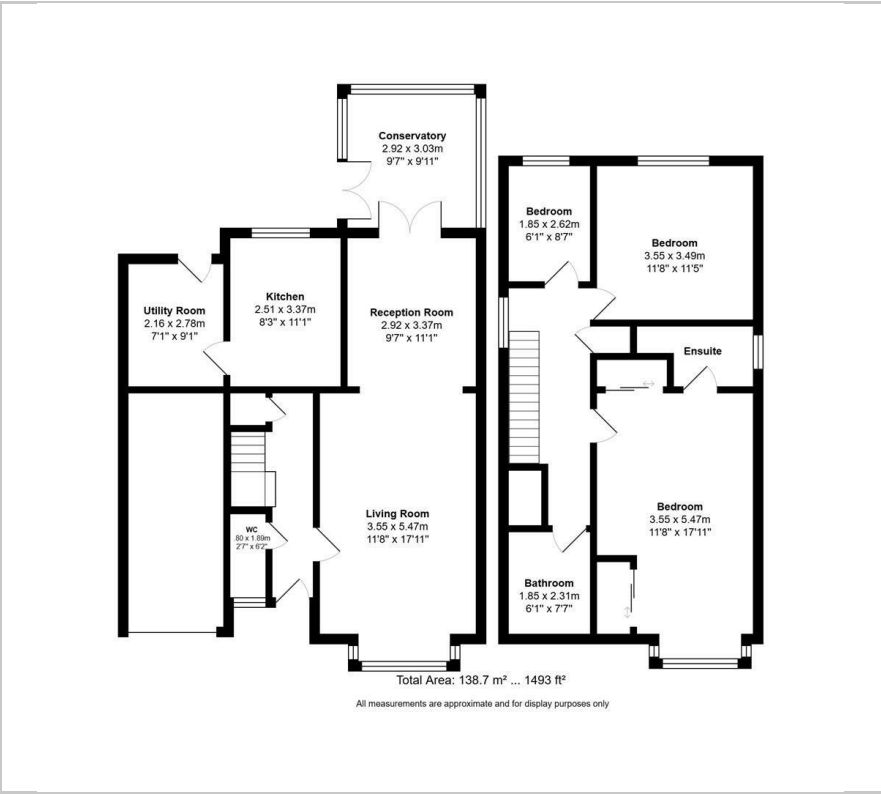
- Three bedrooms
- Sought after location on a quiet Cul de Sac
- Two Bathrooms
- Downstairs WC
- Conservatory
- Utility Room
- Two reception rooms
- Detached, circa 1493 sqft
- Leasehold
- Viewings available on request

Viewing

Please contact our Flexi Agent Southport Office on 01704 889455 if you wish to arrange a viewing appointment for this property or require further information.



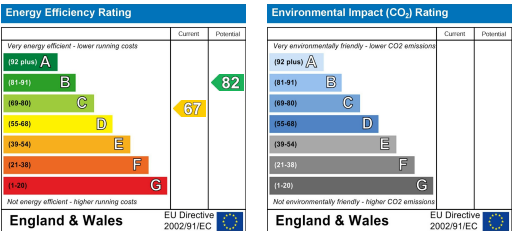
Floor Plan



Area Map



Energy Efficiency Graph



These particulars, whilst believed to be accurate are set out as a general outline only for guidance and do not constitute any part of an offer or contract. Intending purchasers should not rely on them as statements of representation of fact, but must satisfy themselves by inspection or otherwise as to their accuracy. No person in this firms employment has the authority to make or give any representation or warranty in respect of the property.